

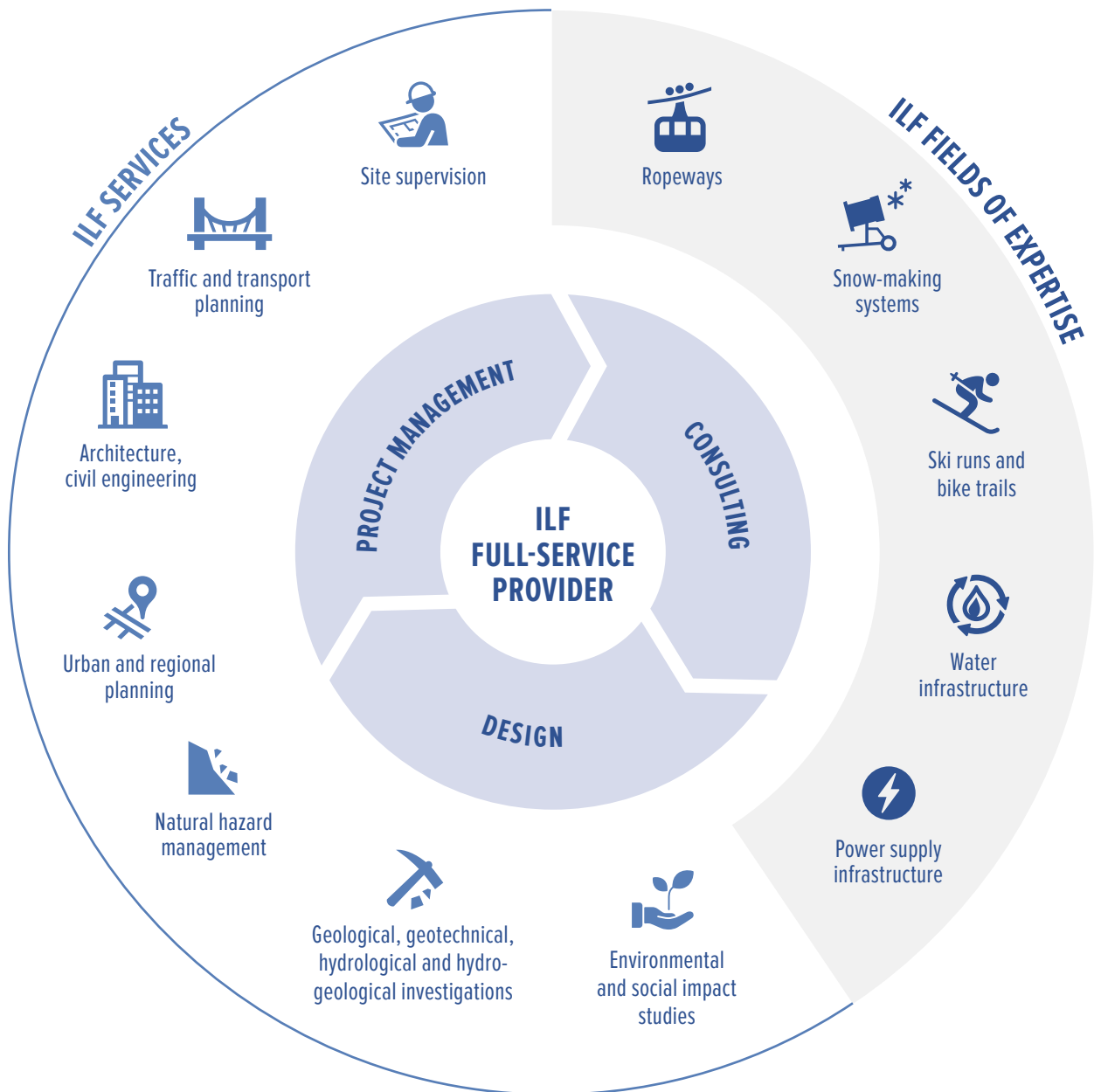
# SKI RESORTS.

ENGINEERING EXCELLENCE



# SKI RESORTS

It all starts with the vision for a new ski resort. To implement this vision, various disciplines are needed. These disciplines need to be coordinated efficiently to prepare a coherent design that is based on reliable data. As a full-service provider, ILF is able to offer all the design services and fields of expertise required for the successful development of ski resorts and the smooth implementation of projects.



**35+ YEARS OF SKI RESORT PLANNING:**  
PREMIUM SKI RESORTS SUCH AS KITZBÜHEL, SAALBACH-HINTERGLEMM,  
SHAHDAG, SNOW SPACE SALZBURG, SÖLDEN, SOCHI, ST. ANTON

In a first step, ILF draws up a concept with a comprehensive master plan. This plan is based on an integrated planning and design approach, which takes all techno-economical and socio-ecological aspects of a ski resort into account.

After submitting a permit application design that meets all legal framework conditions, successfully completing the permitting process and reaching a final investment decision, the planned ski resort is implemented in several steps, following a comprehensive approach which covers all facets of tourism.

ILF assists clients in all stages, from initial consulting and master planning to permit application design, tender design with subsequent detailed design, to procurement and assistance during construction, and finally commissioning of all facilities.



*“Incorporating professional planning into all project phases is the basis for a ski resort’s success.”*

Alexander Speckle  
Managing Director

## PROJECT HIGHLIGHTS

### Overall design of ski resorts

- The Remarkables (2018–ongoing), New Zealand
- Pitztal–Ötztal Ski Resort – Expansion and Connection (2014–ongoing), Austria
- Shahdag Tourism Complex (2007–ongoing), Azerbaijan
- Roza Khutor Alpine Ski Resort (2005–2008), Russia

### Snow-making systems

- Kitzbühel Snow-Making Systems (2014–ongoing), Austria
- Saalbach-Hinterglemm Snow-Making Systems (1985–ongoing), Austria
- Zell am See-Kaprun Snow-Making Systems (1985–ongoing), Austria
- Sölden Snow-Making Systems (1984–ongoing), Austria
- St. Anton Snow-Making Systems (1984–ongoing), Austria

### Summer attractions

- Bikepark Innsbruck (2016–ongoing), Austria
- Hochoetz Storage Reservoir with Widiversum Adventure Playground (2012–2014), Austria
- Hög Storage Reservoir and Adventure Park (2011–2013), Austria



Pitztal–Ötztal Ski Resort, Austria



Hög Storage Reservoir and Adventure Park, Austria



Sölden Snow-Making Systems, Austria



Bikepark Innsbruck, Austria



[www.ilf.com](http://www.ilf.com)