

LNG.

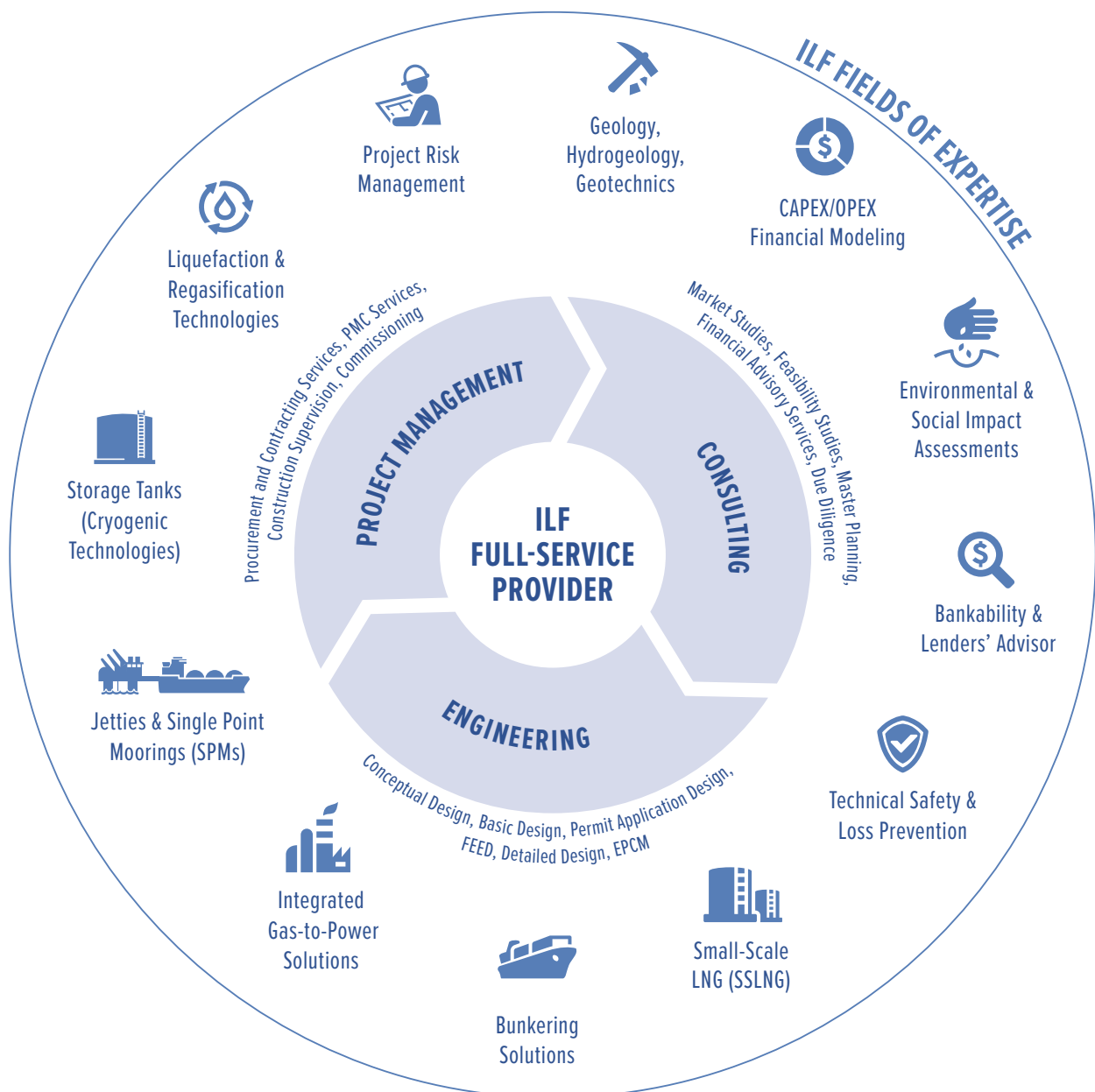
ENGINEERING EXCELLENCE.



LIQUEFIED NATURAL GAS (LNG)

With the demand in natural gas expected to grow by 50% from 2020 to 2040, and a quarter of the increased supply envisaged to be transported in the form of LNG, a large number of LNG facilities will be required around the world.

As a full-service provider for consulting, engineering and project management services, ILF can be engaged by clients to take care of all of the relevant aspects of their LNG projects throughout all project phases.



Being one of the first engineering companies to enter into this business in the USA, ILF's LNG highlights have included its involvement in import terminals of up to 10 MTPA capacity and single tanks of up to 200,000 m³ capacity.

The large-scale market penetration of LNG is still considered to be a recent phenomenon in the oil and gas world. In recent years there has been a "democratization" of the business in the form of small-scale LNG plants for energy islands, for the shipping industry and for onshore mobility applications.



“The substantial development of the LNG business and the increasing transparency of the world market significantly contribute to achieving the objective of reducing CO₂ emissions.”

Christian Heinz, ILF Group Director
Oil, Gas & Industrial

PROJECT HIGHLIGHTS

- Kutubdia Offshore LNG Terminal Project (600 mmscfd, 145,000 m³), Bangladesh
- LNG Terminal in Świnoujście (5 bcm/a + 2.5 bcm/a expansion; 2 storage tanks with 160,000 m³ capacity), Poland
- FSRU Terminal in Gdansk (4.5–9.0 bcm/a), Poland
- Concept Development for LNG Import and Distribution (125,000 m³ capacity), Lebanon
- LNG Import Terminal in Odessa (1,000 mmscfd; 2 storage tanks with 180,000 m³ capacity), Ukraine



LNG Terminal in Świnoujście, Poland



LNG Tanker unloading in Świnoujście, Poland



LNG Import Terminal in Odessa, Ukraine



FSRU in Gdansk, Poland





CONSULTING
ENGINEERS

www.ilf.com