



INDUSTRIAL FACILITIES.

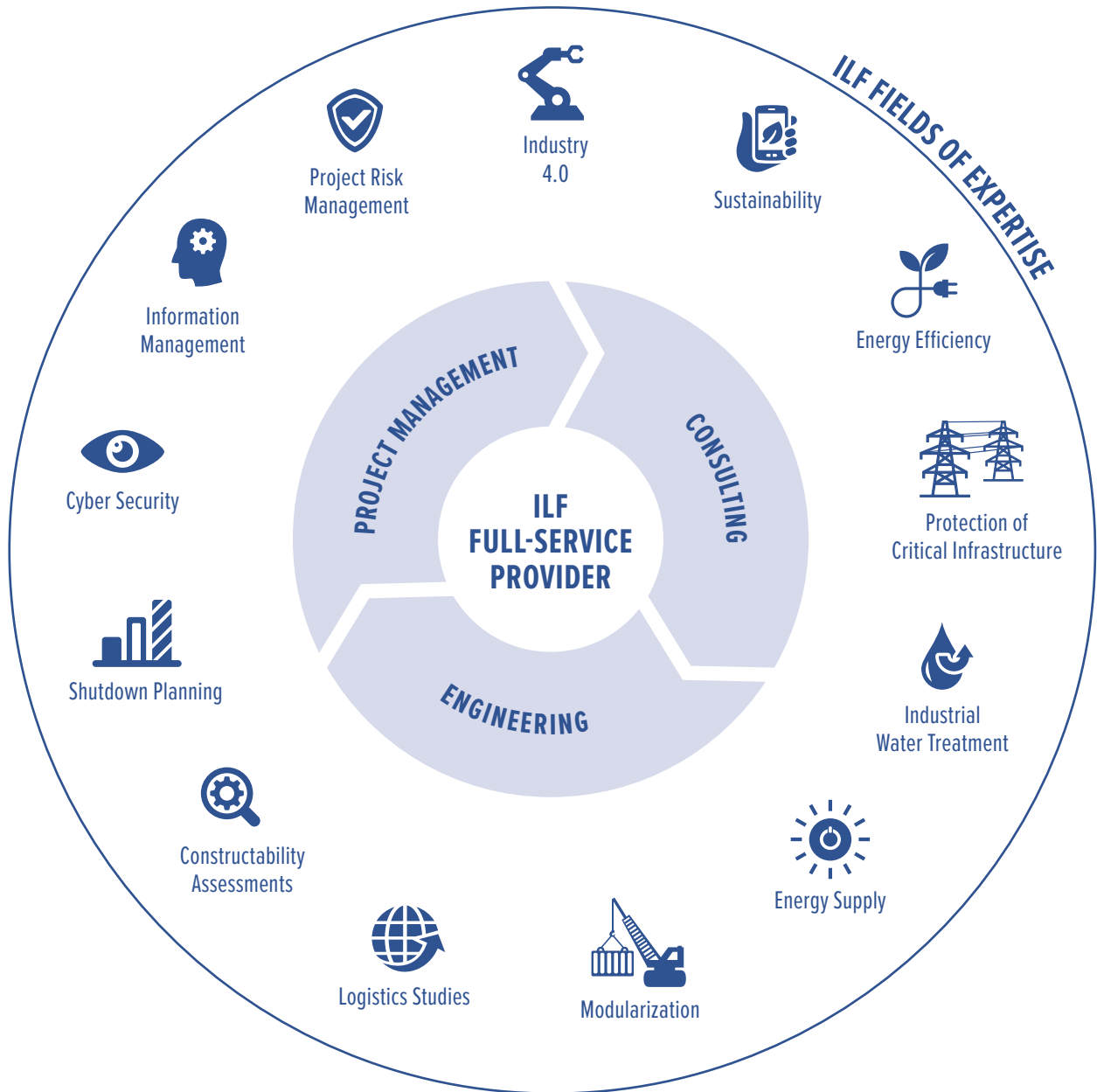
ENGINEERING EXCELLENCE.



CONSULTING
ENGINEERS

INDUSTRIAL FACILITIES

We are living in the fourth industrial revolution: the digitalization and interconnection of all processes, including management and administrative systems. When modernizing industrial production facilities, the most important goals are to improve energy and material efficiency, optimize processes and make warehousing and logistics cost-efficient.



**METHODOLOGICAL COMPETENCE
AND TECHNICAL EXPERTISE:
THE KEY TO SUCCESS!**

Ensuring high plant availability and increasing productivity are the driving forces in every industrial facility, which present clients with the widest variety of challenges.

HIGHLY SATISFIED CLIENTS FROM THE FOLLOWING INDUSTRIES REGULARLY TURN TO ILF:

- Metal industry
- Mineral industry
- Food and beverage industry
- Personal and home care industry
- Building materials industry
- Paper industry
- Plastics processing industry
- Glass industry

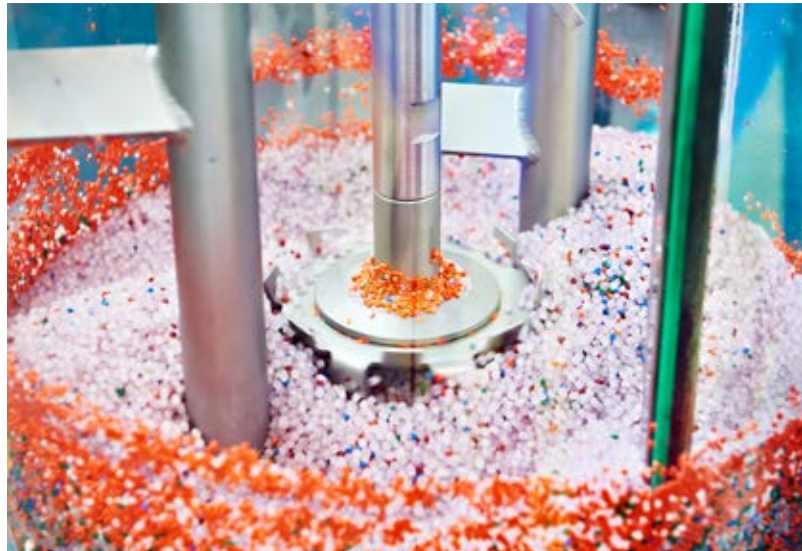


“We are proud to make a technically competent contribution to the cost-efficient and timely implementation of measures for our clients.”

Thomas Schieler
Director for Industrial Facilities

PROJECT HIGHLIGHTS

- Project management and expert consulting for the automation of mineral industry plants
- Turnaround management for a petro-chemical complex
- Turnaround management for a copper recycling plant
- Basic engineering for a new slag granulation process
- Project management and engineering for the replacement of the high-pressure system in a combined heat and power plant
- Project management and engineering for a pneumatic conveying system and a silo farm for plastic granulate
- Project management and engineering for the expansion of a cooling tower
- Project management and engineering for the renewal of a hydrogen compressor station
- Project management and engineering for a flue gas desulphurization and denitrification (DeNOx) plant
- Detailed design for the expansion of a sulphur solidification plant





CONSULTING
ENGINEERS

www.ilf.com